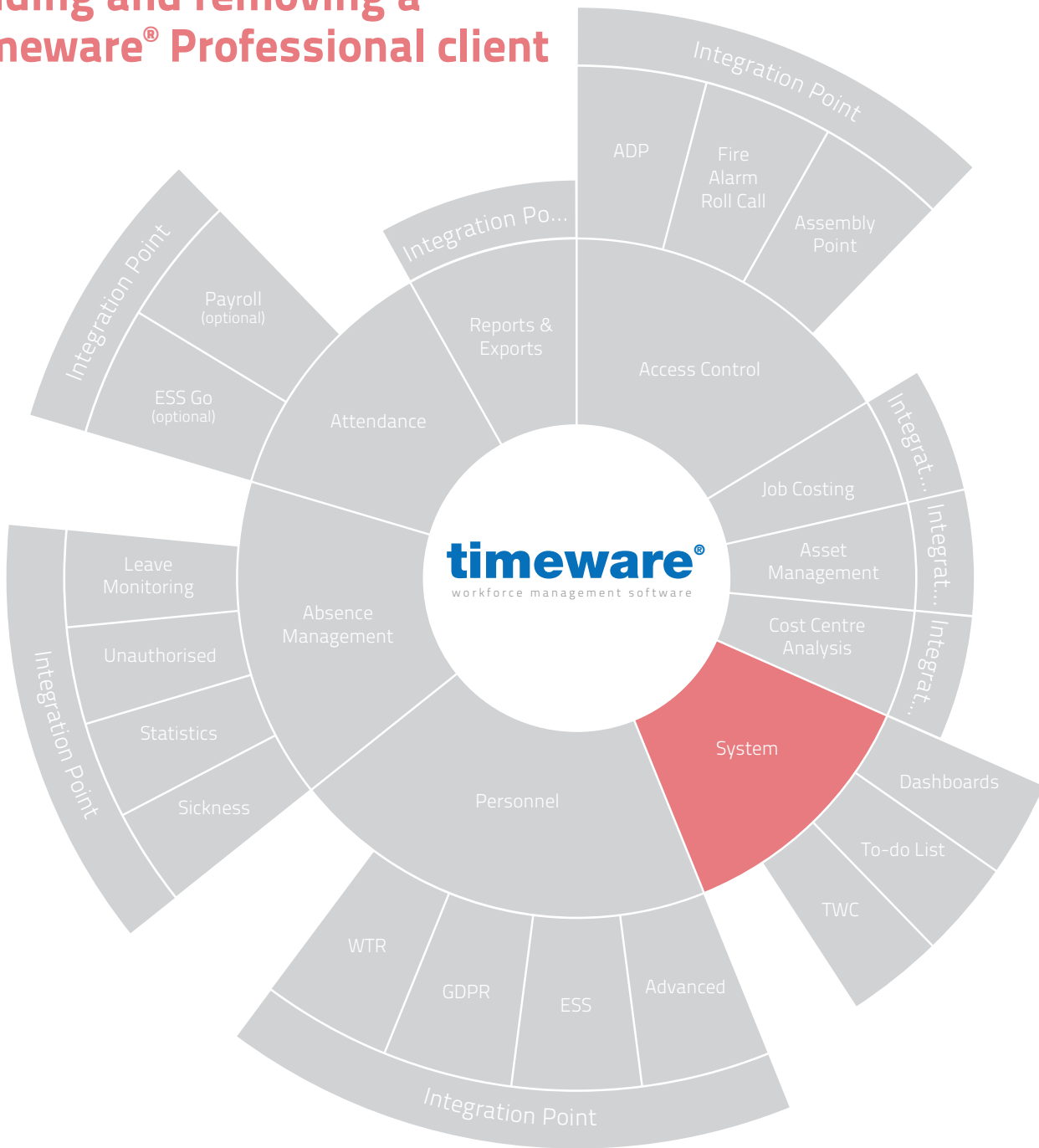


Training guide:

Adding and removing a timeware[®] Professional client



For more information about timeware® products,
version updates, datasheets and reports, please refer
to the timeware® community website:

www.timeware.org

We acknowledge the intellectual property rights of
third parties, trade marks and brand names used
within this document.

NMD³ Ltd

www.timeware.org
+44 (0)1706 659368

Contents

Page

6. Installation of a timeware[®] client

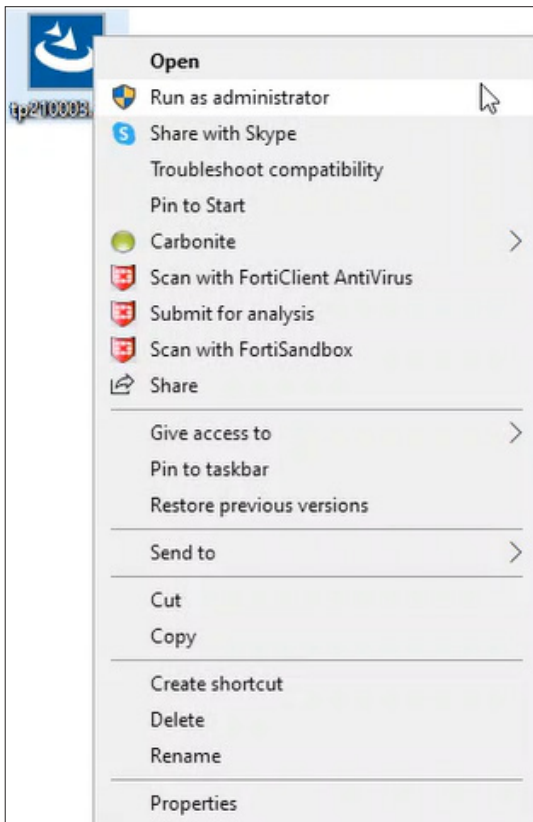
All information pertaining to any personnel record within this document is obtained from a demonstration database and are not details of any individual.

Installation of a timeware® client

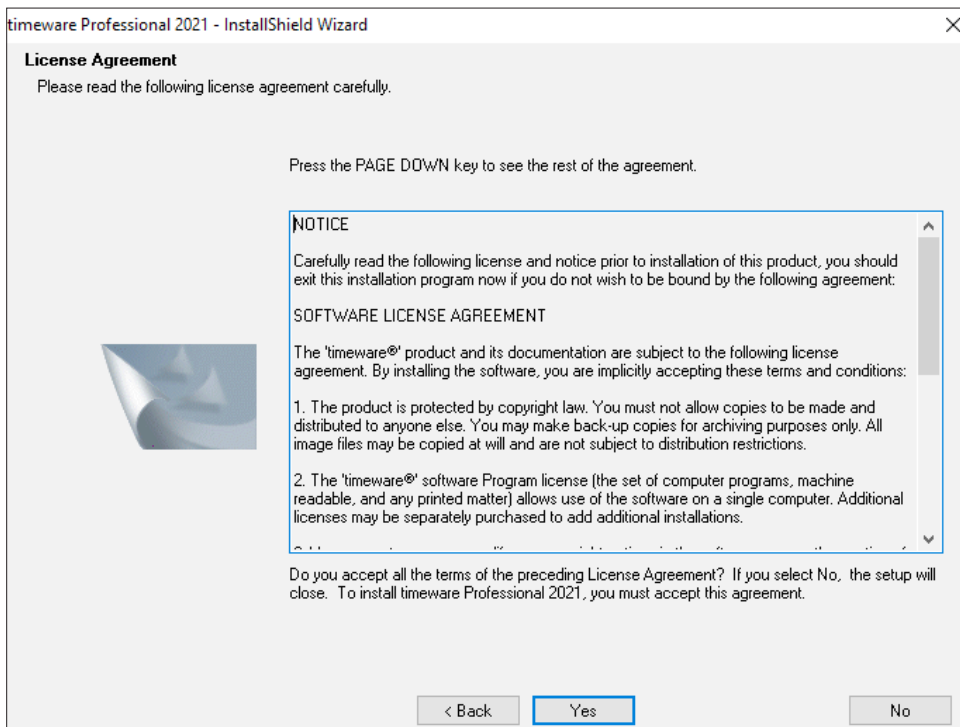
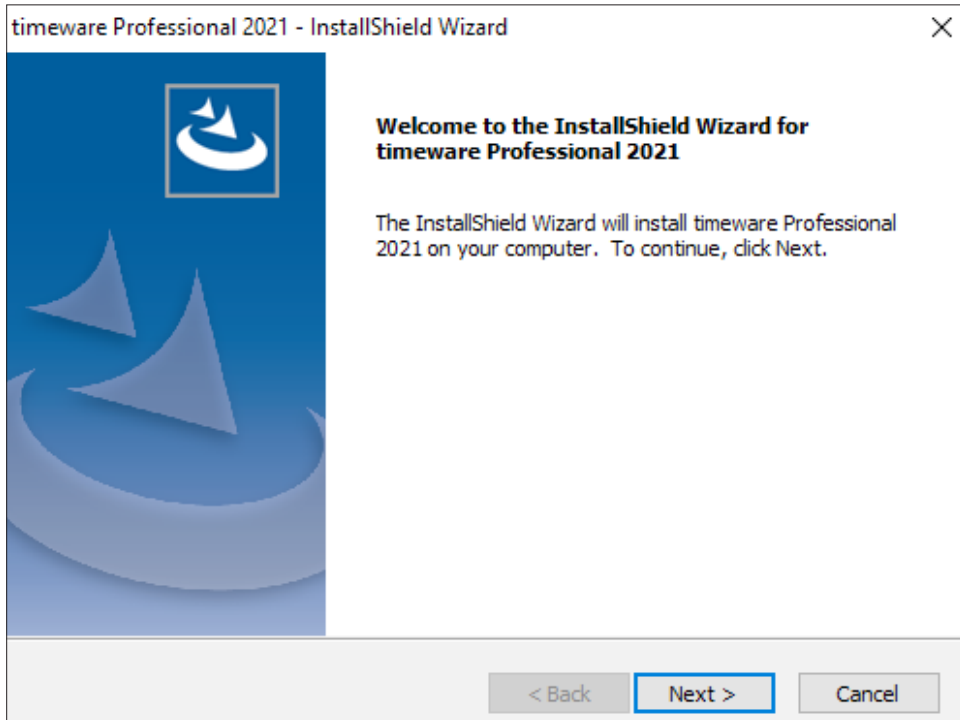
- First and foremost when installing a client version of timeware® you are required to know the exact version of timeware® used on the timeware® server. If the versions were to be incorrect then there will be an incompatibility between them and the client would not be able to function (15.1.0 isn't compatible with 15.1.1). This can be found by going to the help/about screen on timeware®.
- Once the version is established, the correct installation file needs to be located. The installation files are named 'tp' followed by the version eg 'tp150101' and most likely can be found on your server. If not however, please contact timeware® support on 01706 658 222. The very latest versions of timeware® can be found at www.timeware.org



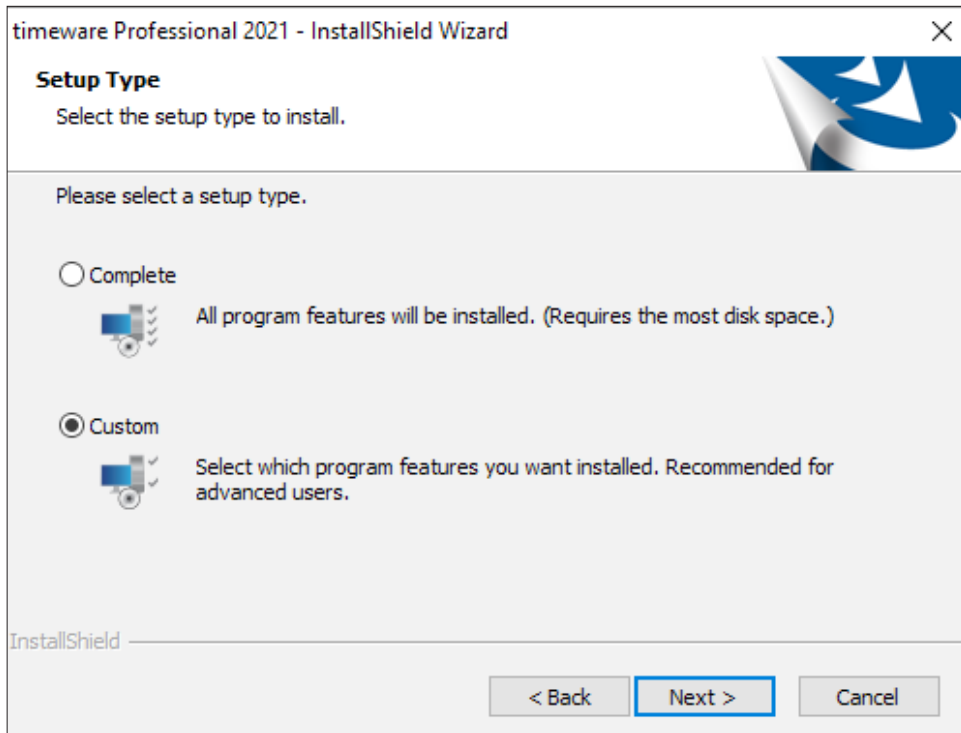
- Right click on the installation file and run as administrator. It may ask you to input the administrator credentials if not logged on with an administrative account but this is required.



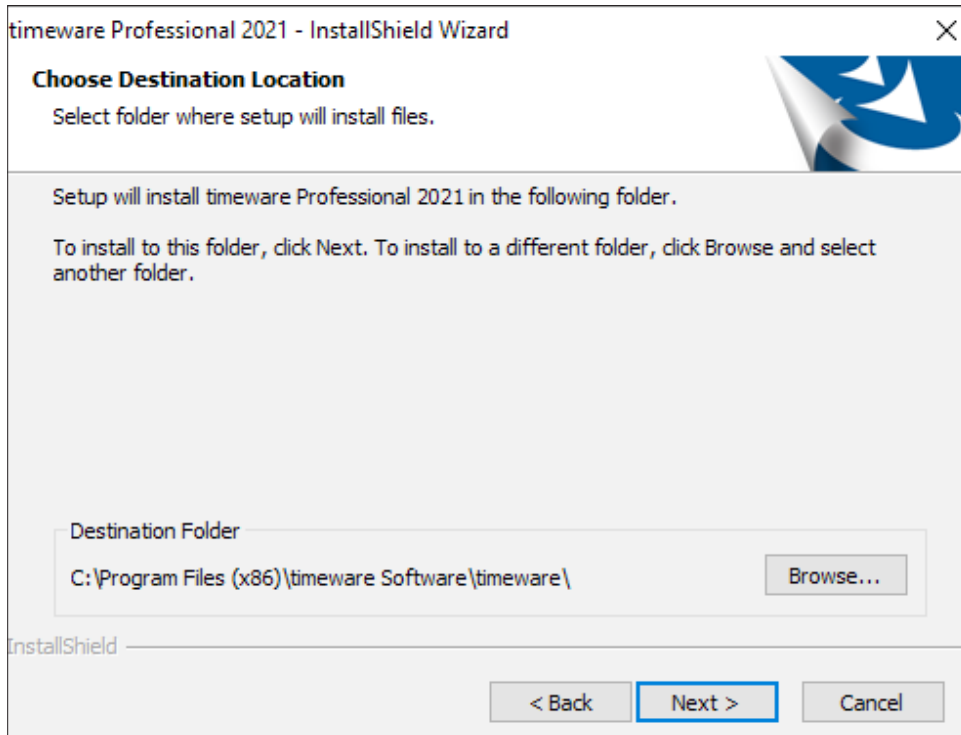
- You will be presented with an installation wizard. Click next and then you will be required to accept a licence agreement. Once you are happy to accept the agreement, click Yes.



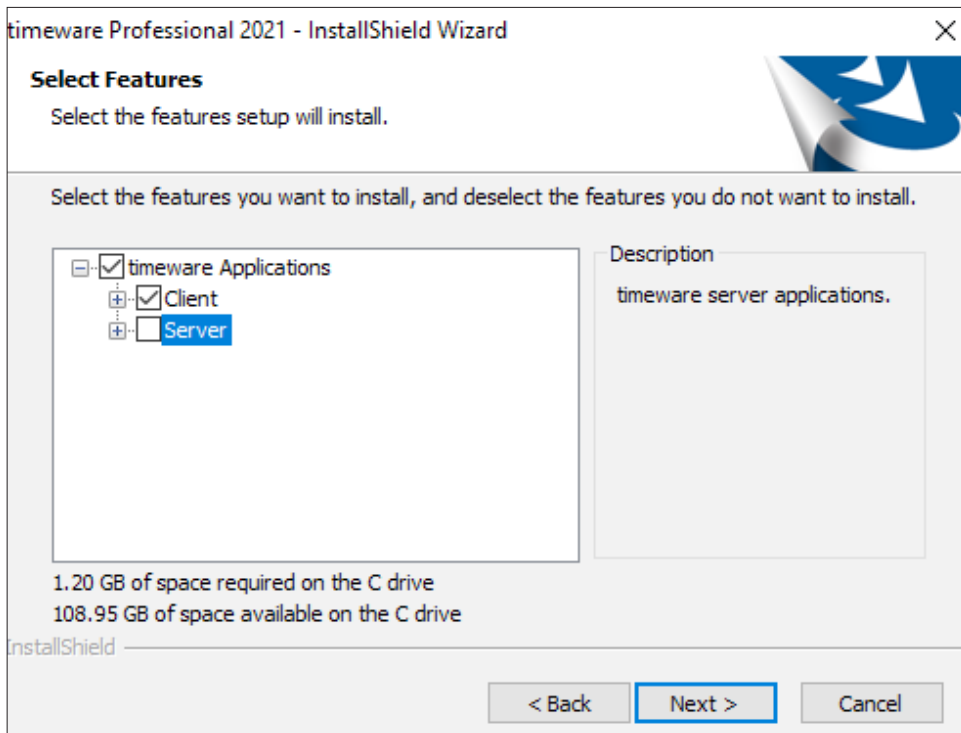
- In the next screen there is an option to select either a "Complete" or "Custom" installation. The complete installation is all the components for a timeware[®] server, so make sure to choose the custom installation.



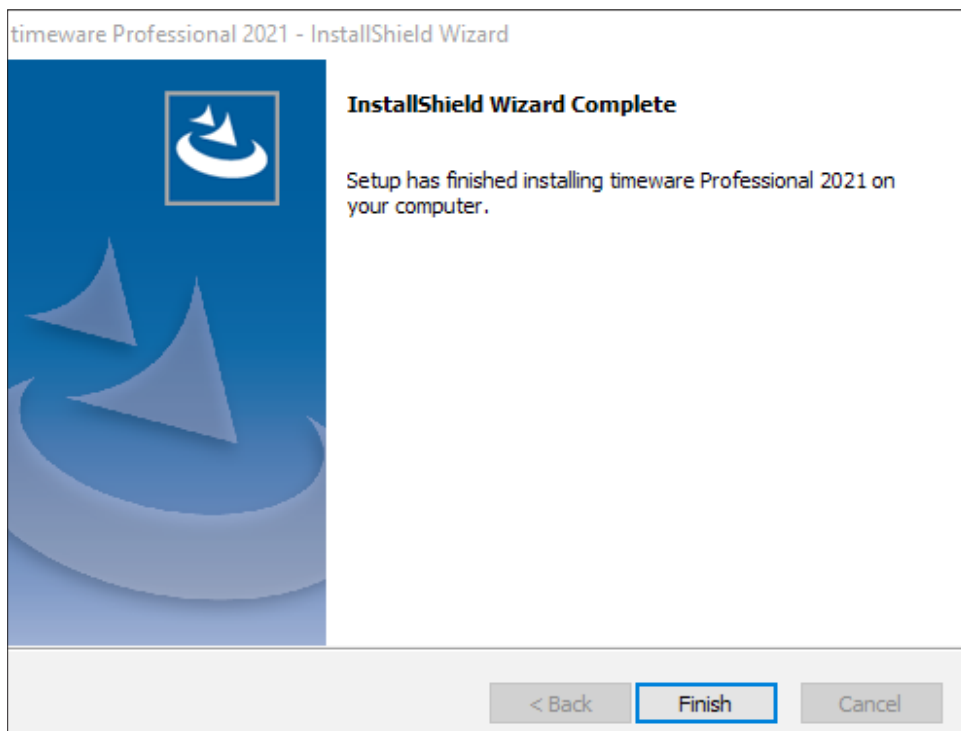
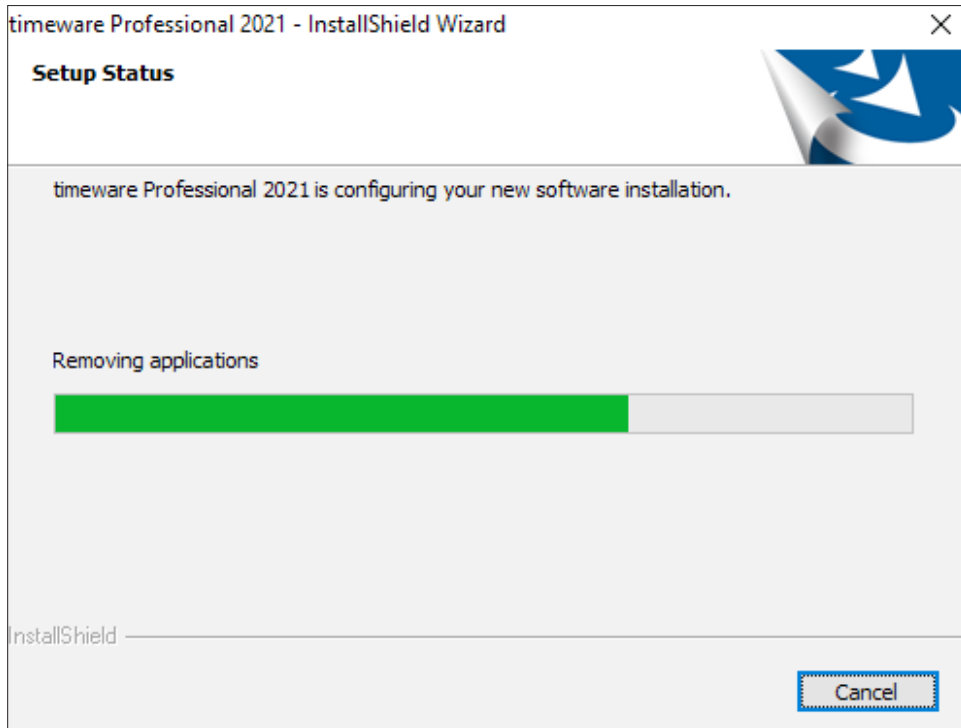
- Click next, then Select the installation path you require the software to be installed into (default is C:\Program Files (x86)\timeware Software\timeware)



- After clicking next, you will be presented with the options of what to install. Un-tick the server option and click next. This is so you do not install the server portion of the timeware[®] software which is not required for a client installation and will cause issues further down the line.



- Click next and wait for the installation to complete. Once it completes the installation click finish.



- We now need to get the software connecting to the SQL database which can be simply done by copy and pasting a file from the server to the client PC. The file itself is called "SQLConnection.ini" and can be found in the following location (C:\Program Files (x86)\timeware Software\timeware\TData) on the server. Simply transfer the sql file onto the client PC and paste it into the same location above. Alternatively, if you know the SQL credentials simply go through the SQL wizard provided when you run the timeware® software.



- The software will now be able to be used by the client and is safe for the customer to log on.

The screenshot displays the 'To-do' List interface within the timeware software. The interface includes a menu bar at the top with options like File, View, Tables, Sort and Filter, Wizards, Advanced, Hardware, and Help. A sidebar on the left contains 'Quick Links' for To-do List, Dashboard, Reports, Exports, Attendance Display Panel, and Personnel. Below the sidebar are sections for 'Favourite Reports', 'Favourite Exports', 'Personal Notes', 'Personal Diary', 'Scripts', and 'Other Programs'. The main content area shows the following items:

- Online Information:** [timeware® Community latest news and major developments about your product](#)
- Attendance Adjustments:**
 - [127 Outstanding missed bookings that require attention](#)
 - [1213 Outstanding unauthorised absences that require attention](#)
 - [11 Full day absences have been worked that may require attention](#)
- People Missing from Active Daily Schedules:**
 - 09:30 - 13:00 (9:30am - 1:00pm on Wed 20 August 2014)**
 - Conway, Sharon (19): "HOLIDAY FULL DAY"
 - 09:00 - 17:00 (9:00am - 5:00pm on Wed 20 August 2014)**
 - Rush, May (11)
 - Workday (Non Clocking) (9:00am - 5:00pm on Wed 20 August 2014)**
 - Broadhurst, Richard (33)
 - Korranov, Peter (8)
 - Price, Nathan (7)
 - Webb, Dave (12)
 - 08:30 - 17:30 (8:30am - 5:30pm on Wed 20 August 2014)**
 - Coope, Michael (20)
 - Hob, Bradley (15)
 - Wilkinson, Matthew (26)
- Core Time Infringement:**
 - 09:00 - 17:00 (9:00am - 5:00pm on Wed 20 August 2014)**
 - Burill, Martin (10): "5:02am on Wed 20 August 2014"
- Birthdays:**
 - [Simon Birchall - Birthday on '25 August 2014' in 15 days](#)
 - [Nathan Price - Birthday on '25 August 2014' in 15 days](#)
- 1 Years Service:**
 - [Wilkinson, Matthew \(26\): Years service '0 years, 11 month\(s\), 18 day\(s\)'](#)