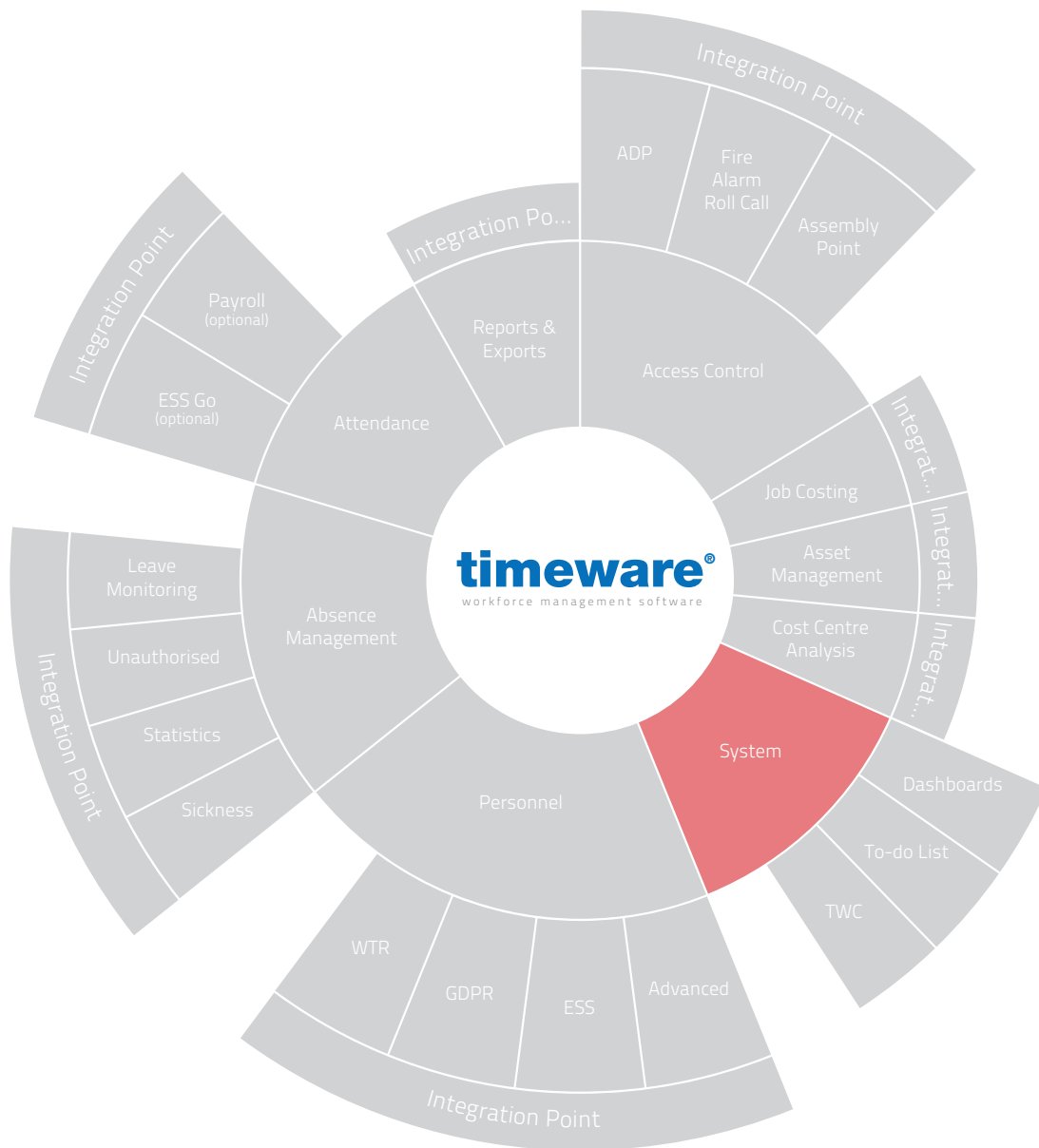




# timeware®

workforce management software

## Installing Microsoft SQL and SQL Server Management Studio





---

For more information about timeware<sup>®</sup> products, version updates, datasheets and reports, please refer to the timeware<sup>®</sup> community website:

[www.timeware.org](http://www.timeware.org)

We acknowledge the intellectual property rights of third parties, trade marks and brand names used within this document.

NMD<sup>3</sup> Ltd

---

[www.timeware.org](http://www.timeware.org)  
+44 (0)1706 659368



## Contents:

---

**Page**

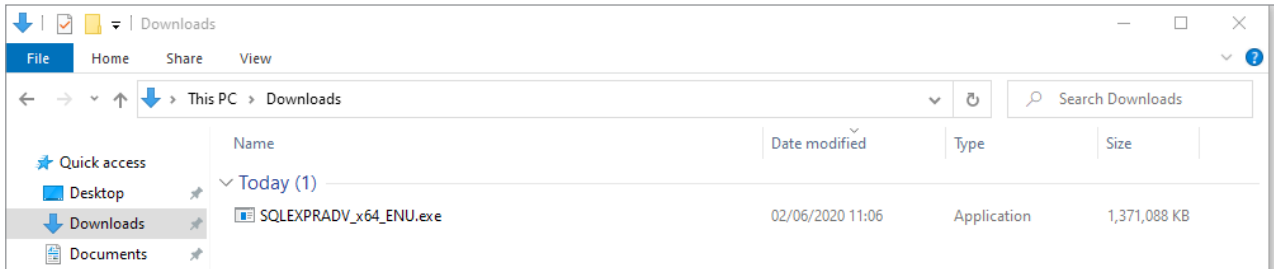
- 6.** Installing SQL 2012
- 11.** Installing SQL Server Management Studio (SSMS)
- 13.** Configuring SQL Instance & Database
- 16.** Creating a user within SSMS

**\*DISCLAIMER\***

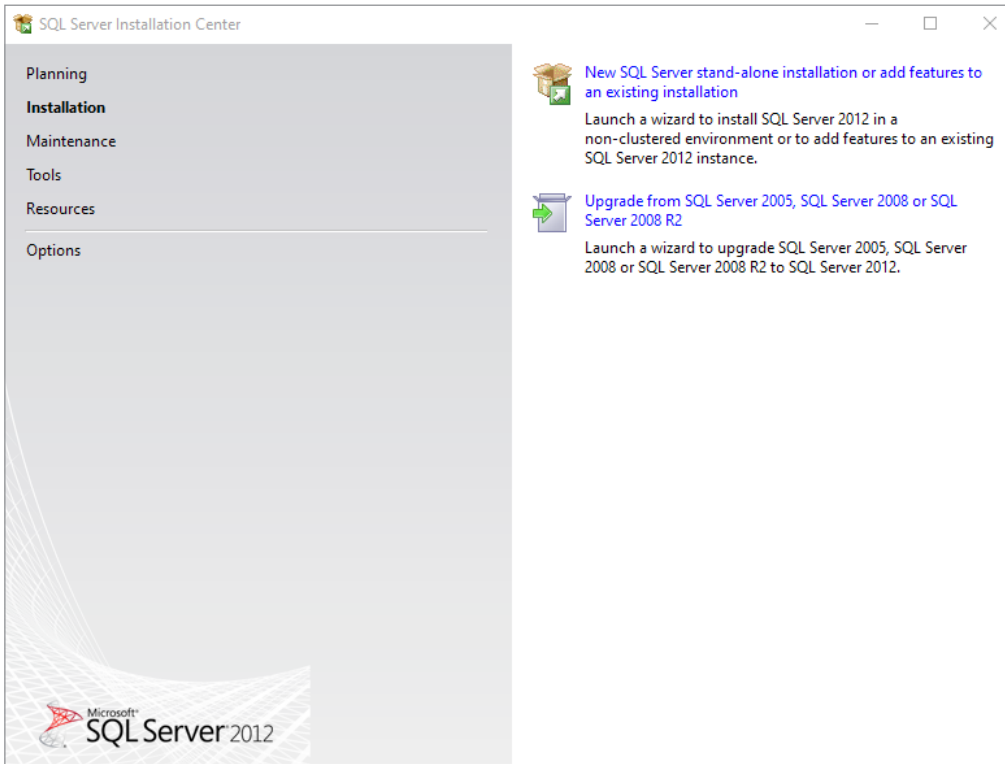
All the specifications made within this document are guides to follow, and may vary on a customer to customer basis. For further assistance, please contact timeware<sup>®</sup> support on 01706 658 222.

# Installing SQL 2012

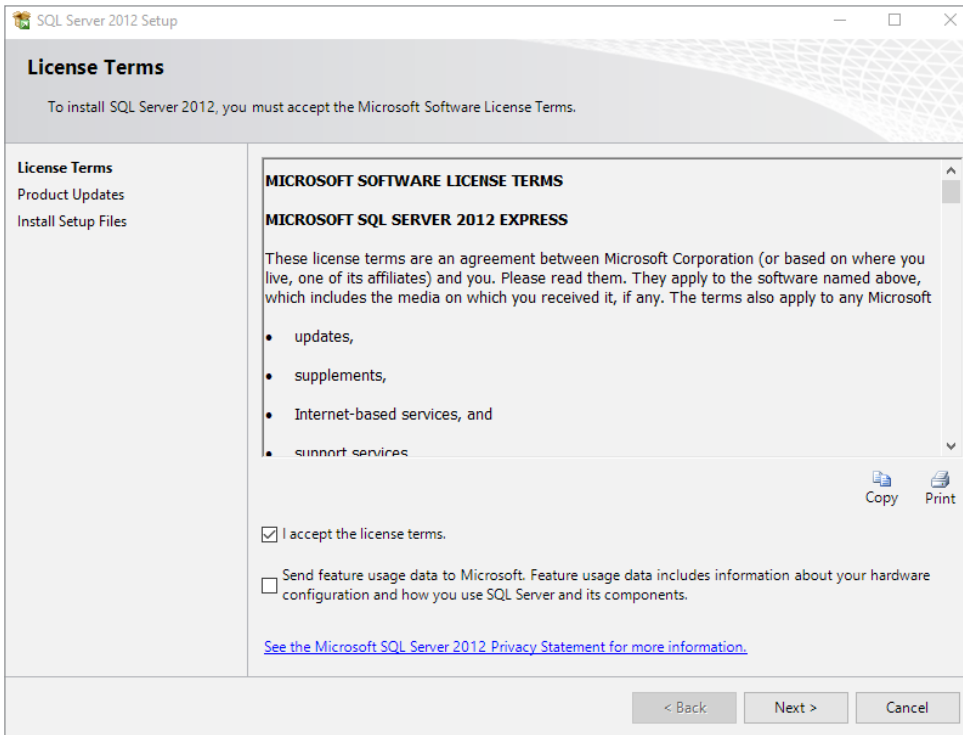
To Install SQL, you will first need to download SQL 2012 Express. <https://www.microsoft.com/en-us/download/confirmation.aspx?id=29062>



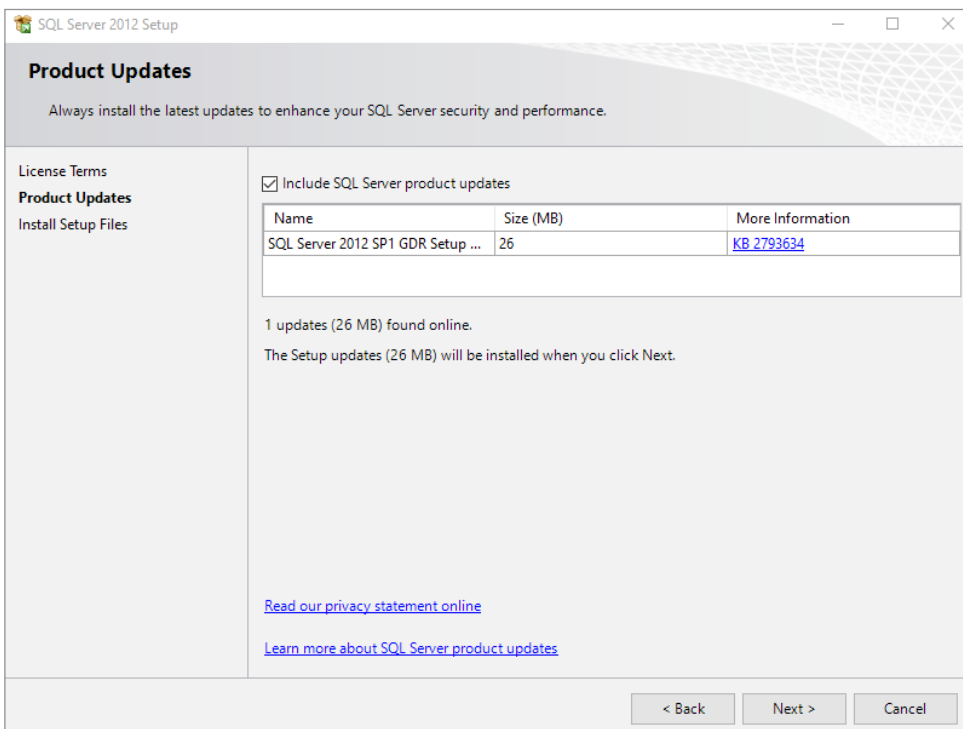
Once SQL has downloaded you will need to open the file. When the SQL installer has opened, you will be greeted with the "SQL Server Installation Center" you will then need to select "New SQL Server stand-alone installation or add features to an existing installation"



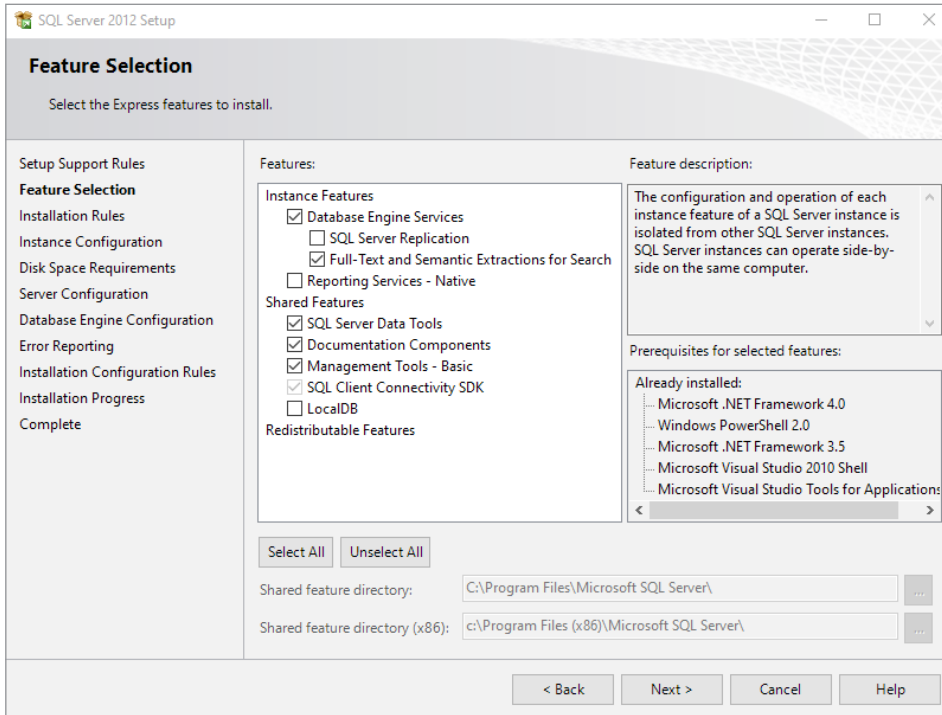
Next you will be required to select the following option "I accept the license terms" before then selecting "Next"



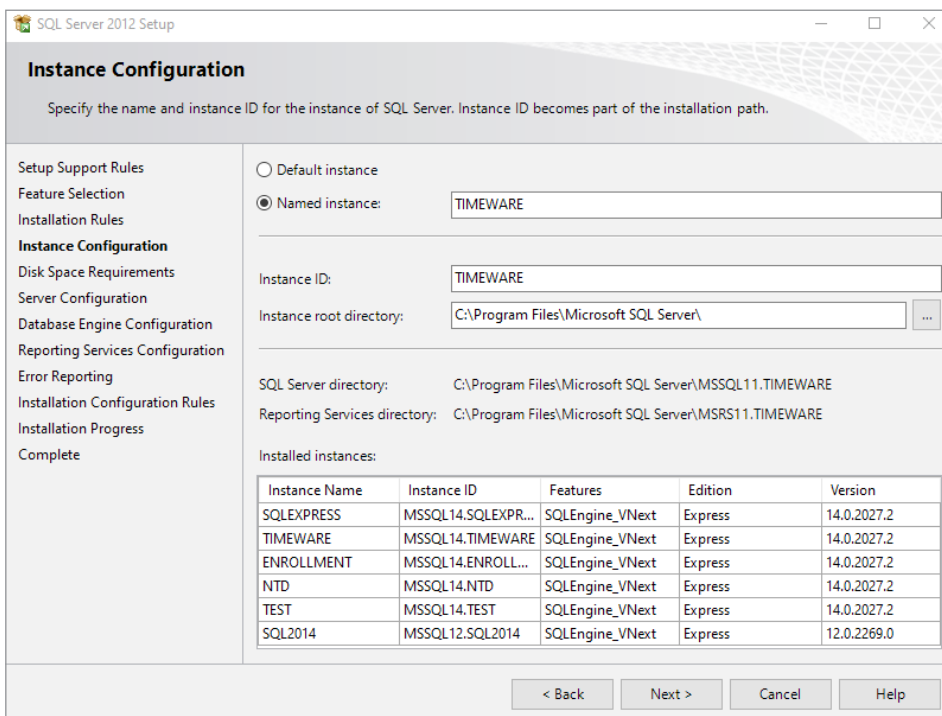
On the "Product Updates" page, you will need to select the option "Include SQL Server product updates" and then selecting "Next"



Next you will be taken to the "Feature Selection" page, SQL will then ask you what features you require to be installed. On this page all options should be selected except from "LocalDB" "SQL Server Replication" and "Reporting Services – Native" Once you have confirmed this is correct, then you will need to select "Next"

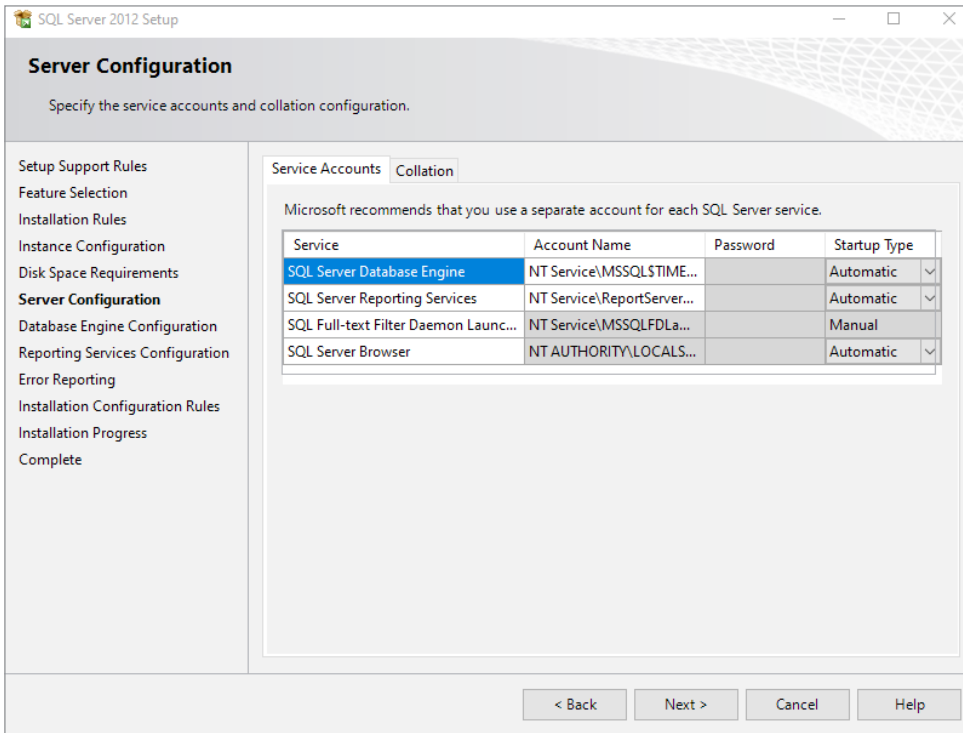


On the "Instance Configuration" page, you will need to select "Named Instance" and then type in the following "TIMEWARE" Then you will need to type "TIMEWARE" into the "Instance ID" section also before then selecting "Next"

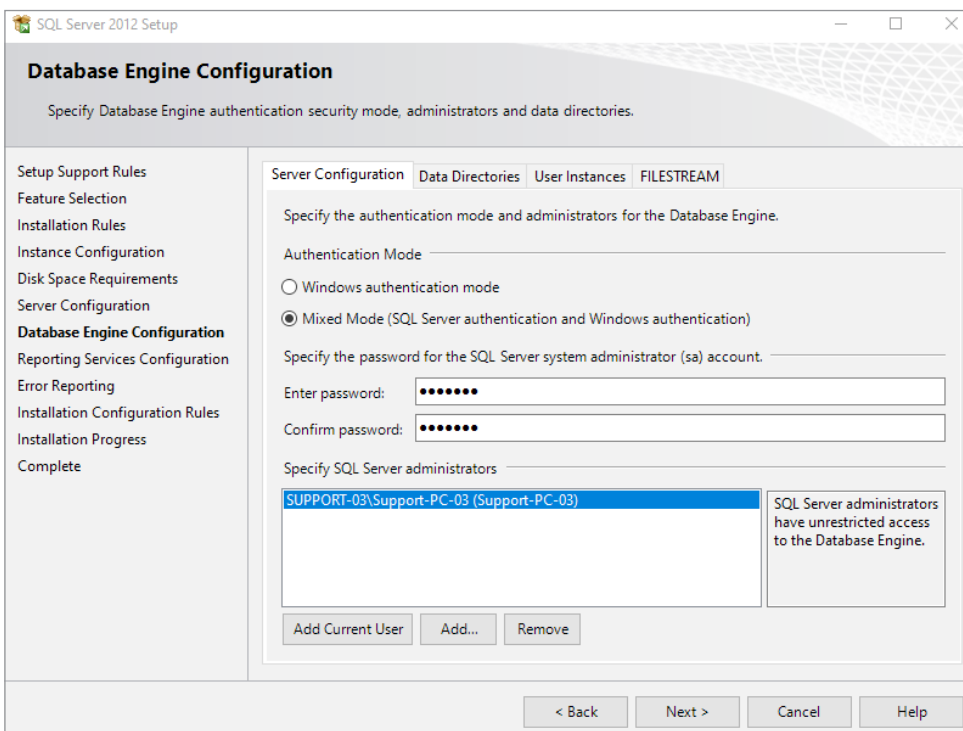




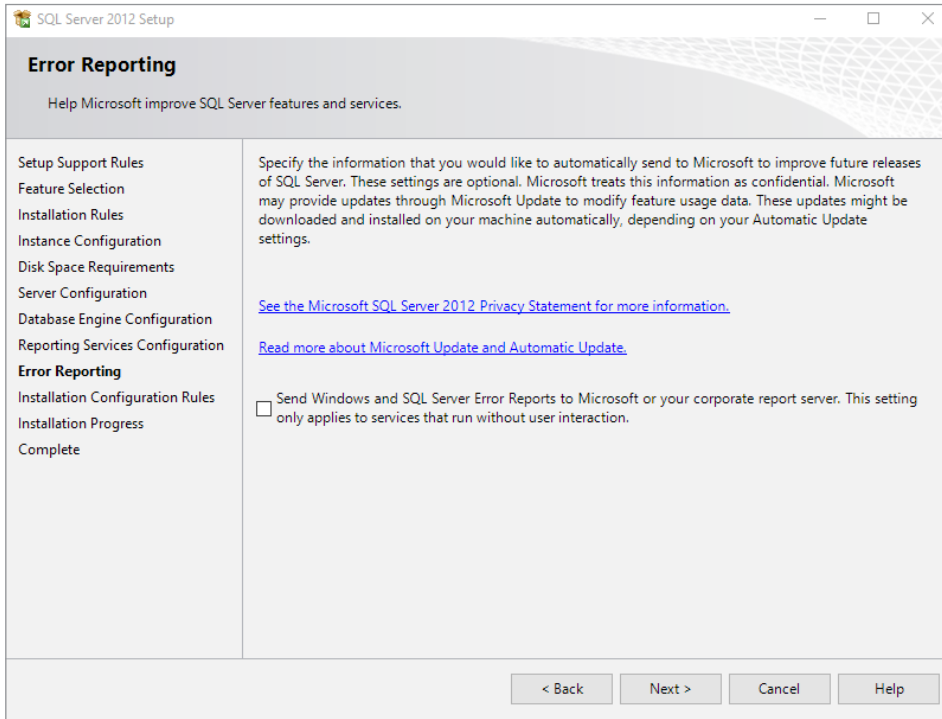
On the "Server Configuration" page you do not require to change anything, so you will just need to select "Next"



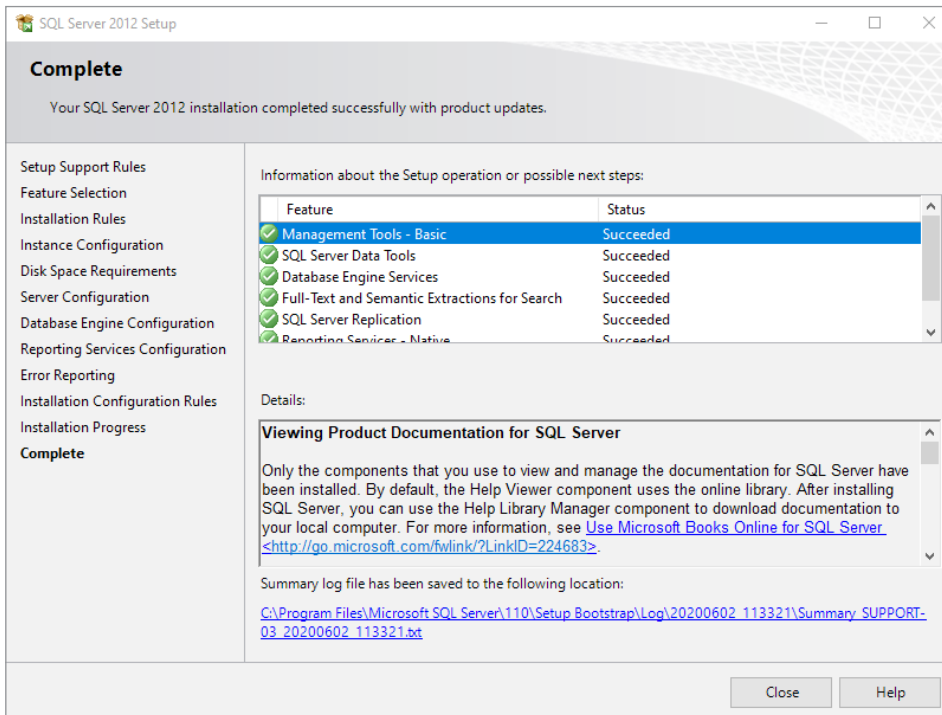
Next, we are required to configure the "SA" account for the SQL database, to do this you will first need to select "Mixed Mode (SQL Server authentication and Windows authentication)" before then entering your own password. (Note: This is the installers responsibility to keep the password) After entering your password then you will need to select "Add Current User" before then selecting "Next"



The next page is "Error Reporting" this is optional if you would like error reporting to be sent to Microsoft or not. Once you have chosen your option you can then continue by selecting "Next" SQL will then begin installing and configuring the instance.



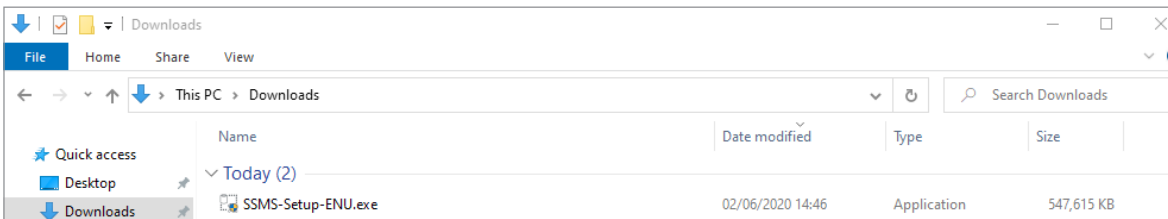
Finally, the "Complete" page informs you that SQL has successfully installed and then you will be able to select "Close"



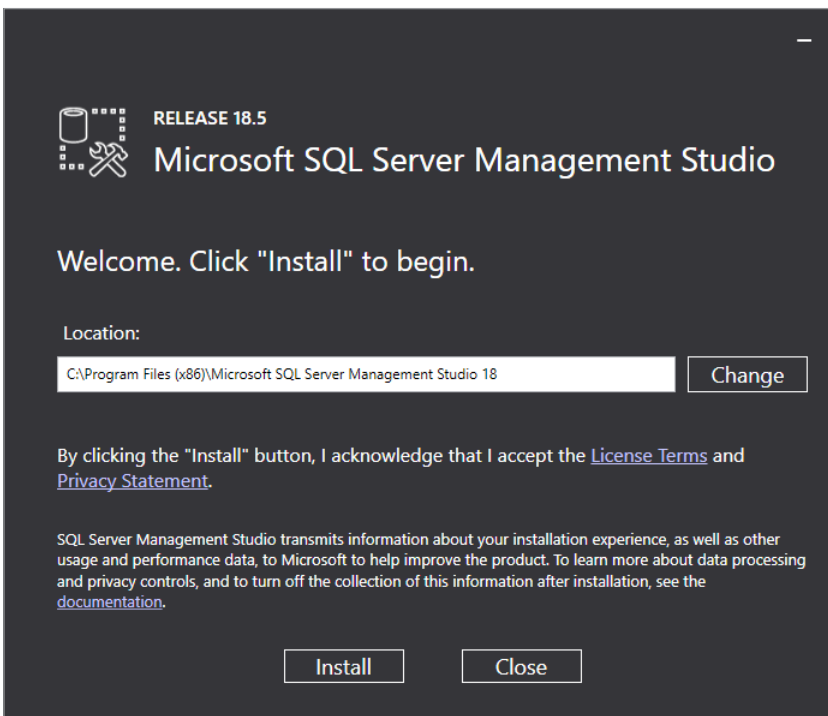
# Installing SQL Server Management Studio (SSMS)

To install SSMS you will first need to download the installer, which can be found on the following link <https://docs.microsoft.com/en-us/sql/ssms/download-sql-server-management-studio-ssms?view=sql-server-ver15>

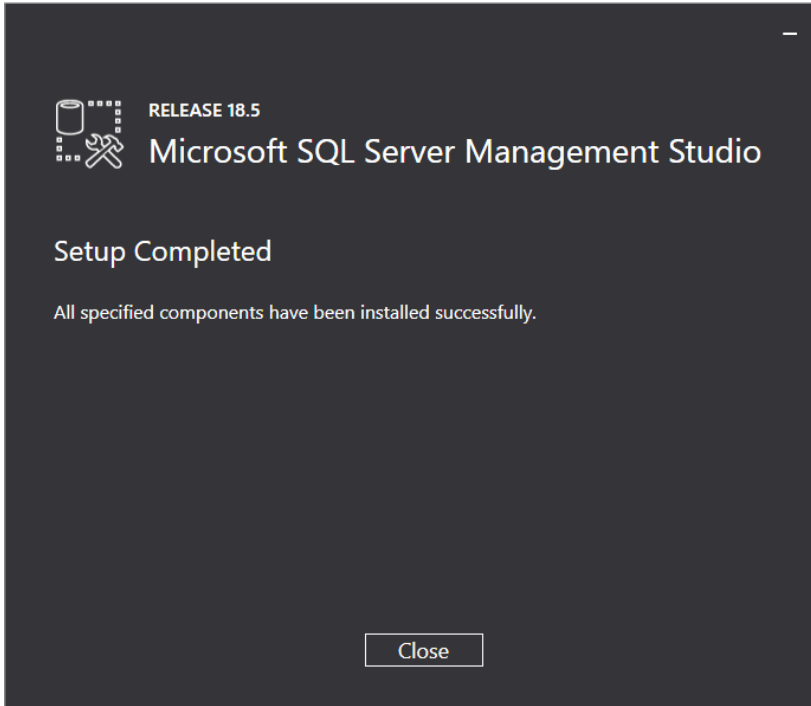
Once the installer has downloaded, you will then need to run the file to start the installation process.



Once the installer has opened you will need to select the option "Install" which will download and configure SSMS onto your system. (Note: timeware<sup>®</sup> do not change the file location unless the customer has requested this to be installed elsewhere)



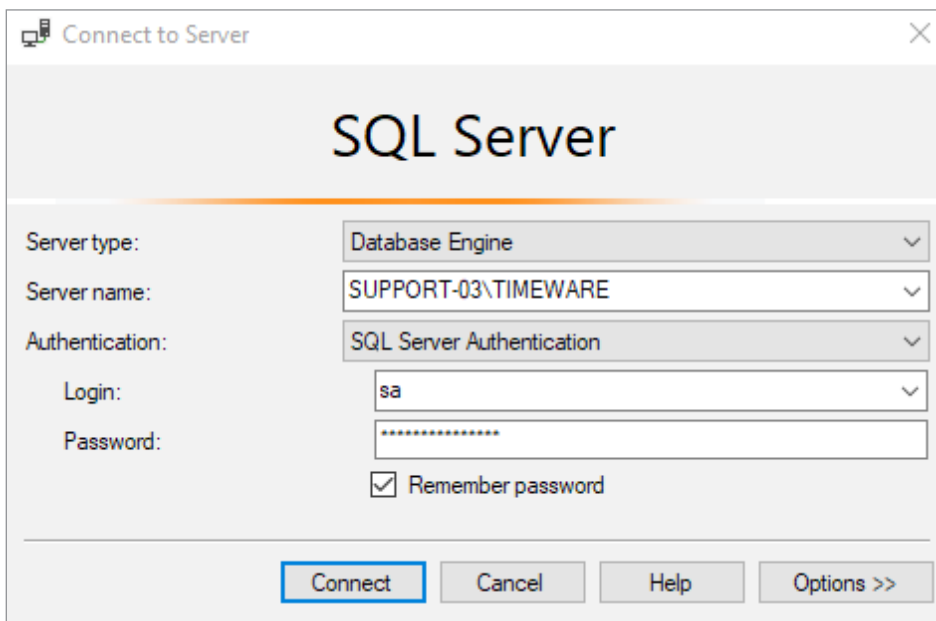
After the installer has completed installing and configuring SSMS you will be told "Setup Complete" where you will then be able to just select "Close" to finish the install.




# Configuring SQL Instance & Database

Firstly, you will need to open SSMS where you will be greeted with a "Connect to Server" login page. In the "Server Name" you will need to enter your computers name and then forward slash, followed by the instance name "TIMEWARE"

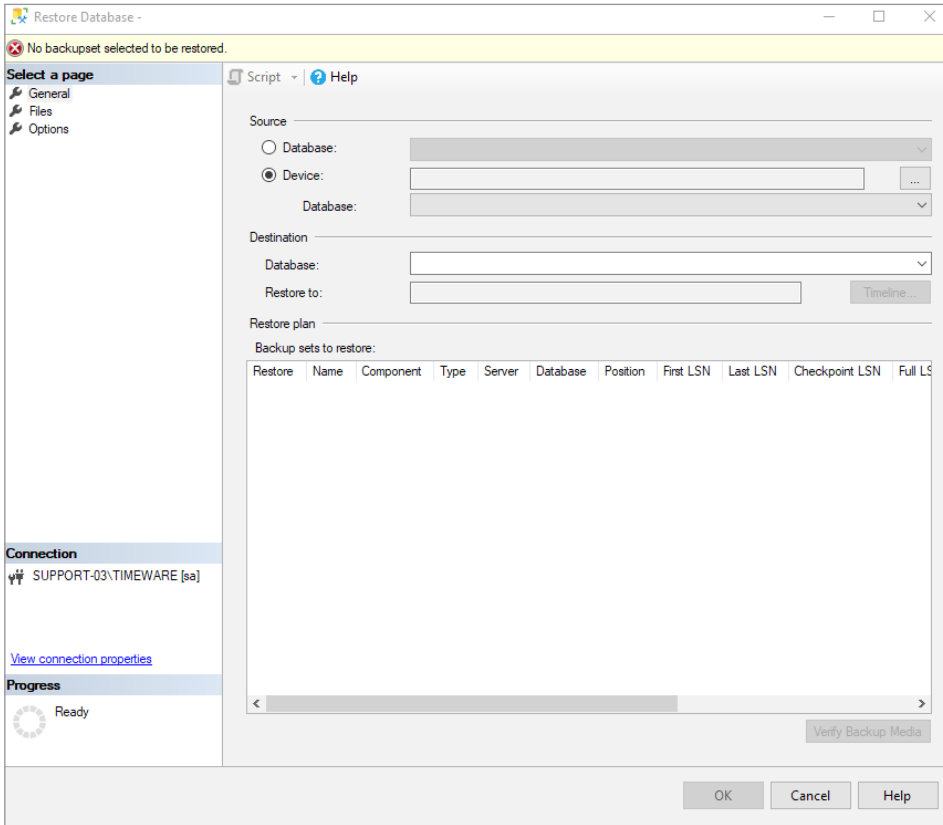
Then you will need to select "SQL Server Authentication" on the "Authentication" dropdown. Before then entering in the "Login" section "SA" and in the "Password" section enter your password you entered during the setup process of SQL.



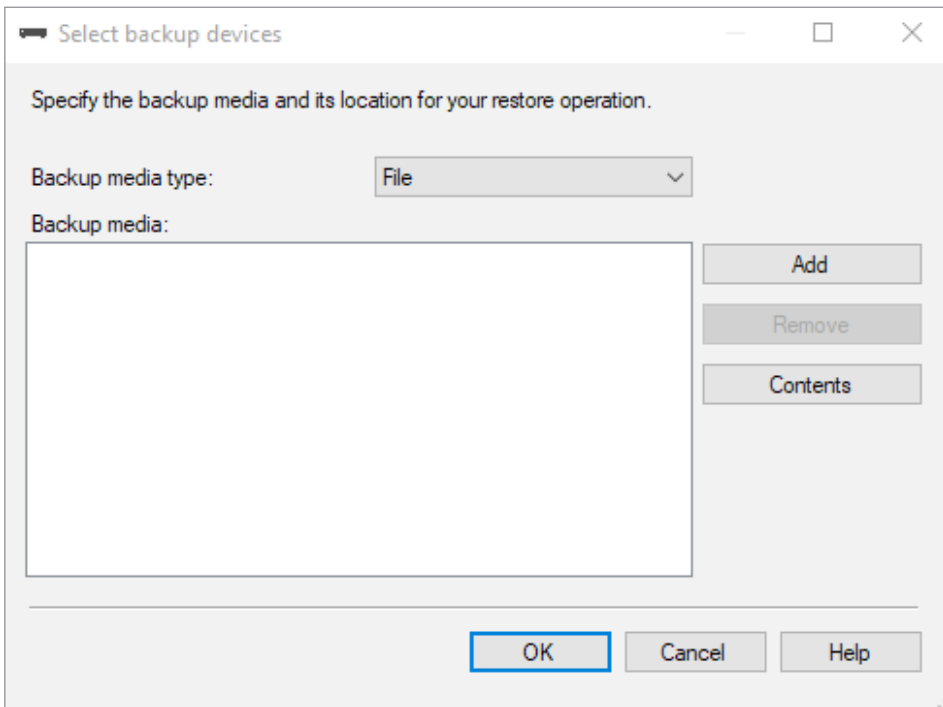
Next, you will then need to go to the downloads section of timeware.info and download the desired database for timeware. There are two options available the "Demo" database is used for demonstrating the software and has some employee's setup to show parts of the software. While the "New System" database is a starting database which is used for configuring a new customer with no example employees.

Database Builds			
Database 			
Software Version	Important Notes	Release Notes	Download Software
Demo	n/a	Guide	Download Released: 15/05/2020 Version: 20.1.5
New system	n/a	Guide	Download Released: 06/01/2020 Version: 20.0.6

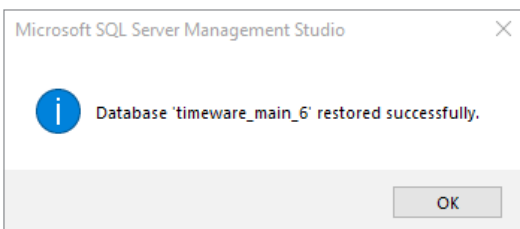
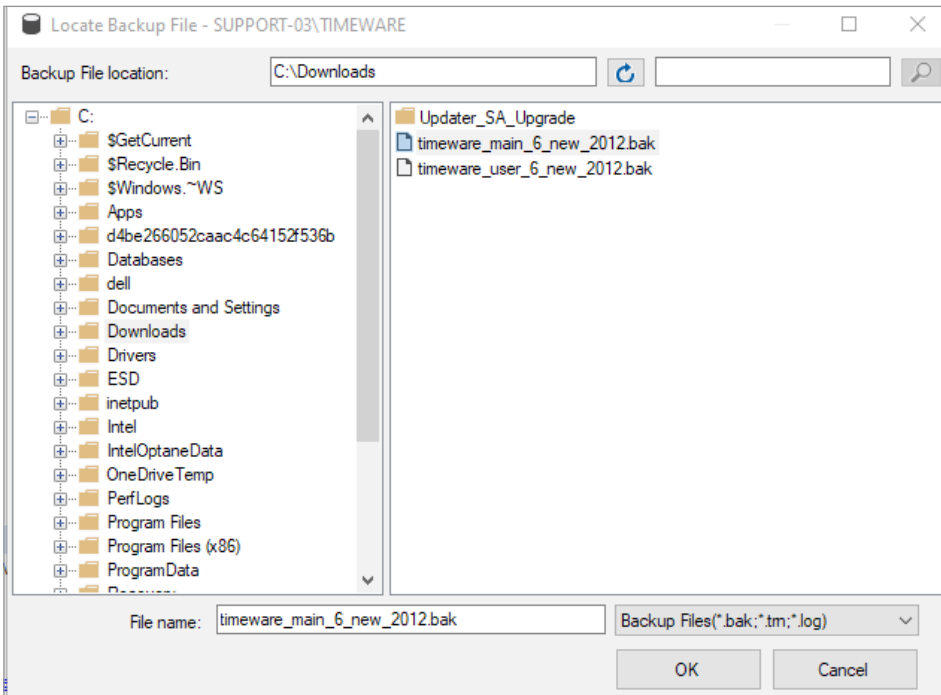
Once you have downloaded the correct database from timeware.info, you will then need to go back into your SSMS. Once logged into SSMS you will need to right click on the folder "Databases" and then select "Restore Database" where you will be taken to the Restore Database screen.



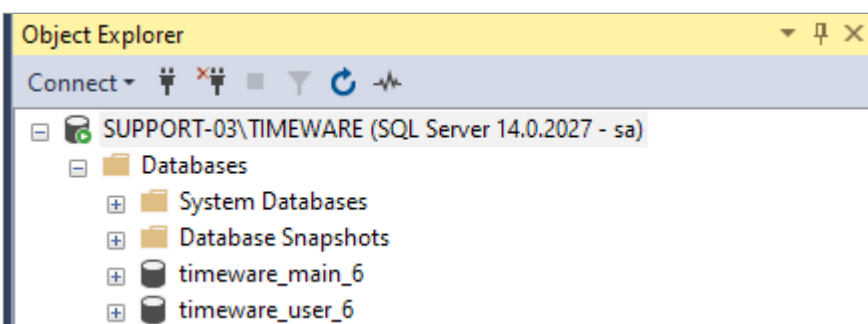
Once you are at this screen you will need to select "Device" before then clicking onto the button with three dots (...) on the right-hand side. Then you will need to click the "Add" button.



Next, you will need to locate where you have saved the database on your computer. Once you have located the 2 database files, you will then need to select "timeware\_main\_6" first before continuing by pressing "OK" then you will need to select "OK" again to start the restore. You will then receive a message to say the database has restored successfully.

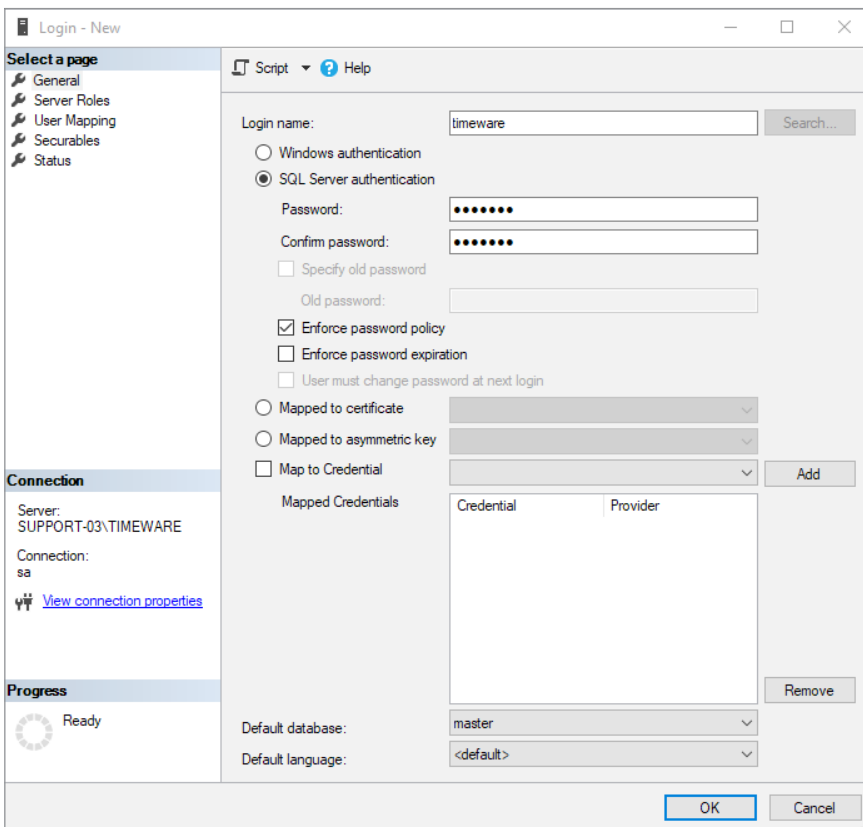


After the restore has completed you will be then required to repeat the restore process for "timeware\_user\_6" Once this is complete you should see both "timeware\_main\_6" and "timeware\_user\_6" in the "Databases" folder.



# Creating a user within SSMS

Within SSMS you will need to expand the folder named "Security" before right clicking on the "Logins" folder and selecting "New Login". A login screen will appear and you will need to enter "timeware" into the "Login Name". Next you will then need to select "SQL Server authentication" before entering a password of your choice (Note: This is the installers responsibility to keep the password). After filling out the password field, you will then need to select "Enforce password policy" and then unselect the other two options: "Enforce password expiration" and "User must change password at next login".



Then you will need select "Server Roles" on the left-hand side of the login window and selecting the following option "public" leaving all other options unchecked. Once you have selected both options you can then select "OK" (Note: timeware® do not use the "SA" login on SQL which is why we create our own "timeware" login)

